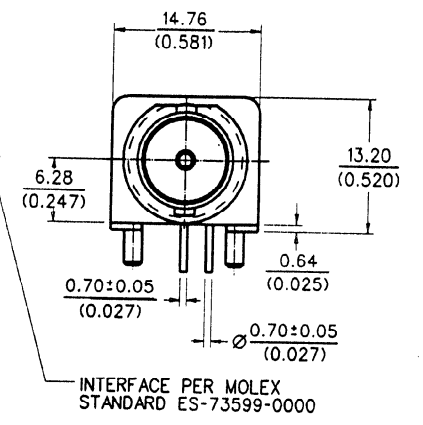
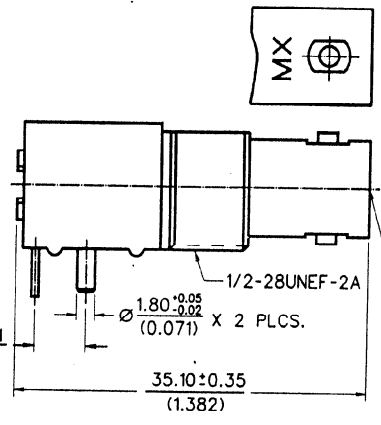
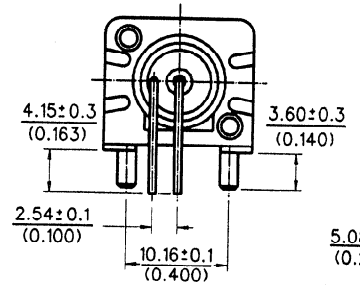
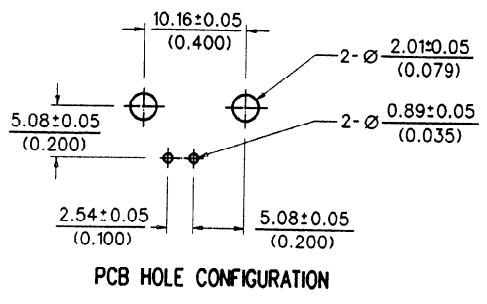


8 7 6 5 4 3 2 1

ENG. NO.
EDP NO.
SIMILAR ITEM
PROJECT NO.
DO NOT SCALE DRAWING



CONSTRUCTION:

- BODY-----ZINC ALLOY
- HOUSING-----POLYESTER BUTYLENE TEREPHTHALATE (WHITE)
- CENTER CONTACT---PHOSPHOR BRONZE
- INSULATOR-----POLYPROPYLENE (94 V-2)
- MOUNTING POST-----BRASS
- SOLDER TAIL-----BRASS WIRE
- WASHER-----PHOSPHOR BRONZE
- NUT-----BRASS

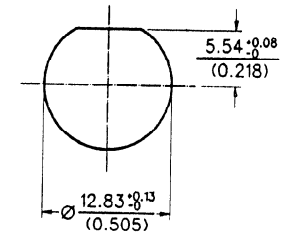
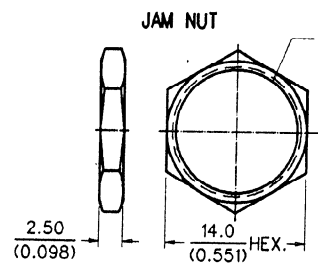
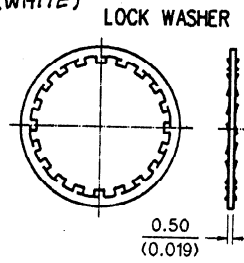
FINISH:

- BODY-----NICKEL PLATING
- CENTER CONTACT---GOLD PLATING
- SOLDER TAIL-----TIN PLATING
- MOUNTING TAIL-----TIN PLATING
- WASHER-----NICKEL PLATING
- NUT-----NICKEL PLATING

MECHANICAL & ELECTRICAL CHARACTERISTICS:
PER PRODUCT SPECIFICATION PS-73598-0051

MATERIAL & FINISHES:
PER PRODUCT SPECIFICATION PS-73598-0051

PACKAGING:
PLASTIC TRAYS



RECOMMENDED MOUNTING HOLE
MAXIMUM PANEL THICKNESS: 5.5 mm
RECOMMENDED MOUNTING TORQUE 5 inch-pounds MAX.

MATERIAL : SEE NOTE				MOLEX TAIWAN LTD. (R.F. DIVISION)	
FINISH : SEE NOTE				GENERAL TOLERANCES	
SCALE : 2:1 UNIT : mm/(inch)				ANGLE : 3° DIM : .25/.010	
DRAWN BY : C.M.HUNG 93/02/01				DRW. NO. : SDA-73100-0069 REV A	
CHK'D BY :				TITLE : 75 OHMS BNC R/A PCB RECEPTACLE	
LTR	REVISION RECORD	ECN	DR/CHK	DATE	APPR'D BY : [Signature] 93/4/1
STANDARD ITEM			<input checked="" type="checkbox"/> YES <input type="checkbox"/> NO		SHEET OF

THIS DRAWING CONTAINS INFORMATION THAT IS PROPRIETARY TO MOLEX TAIWAN AND SHOULD NOT BE USED WITHOUT WRITTEN PERMISSION MXT . So - 13